

# **WIZARD**

for

Chamber Ensemble

by

**Keith A. Hamel**

Duration: 5' 10"

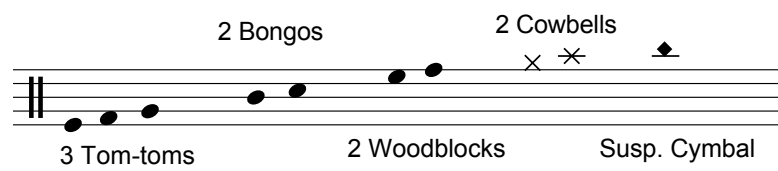
Performance Rights: SOCAN

Copyright: © 2009 Keith A. Hamel

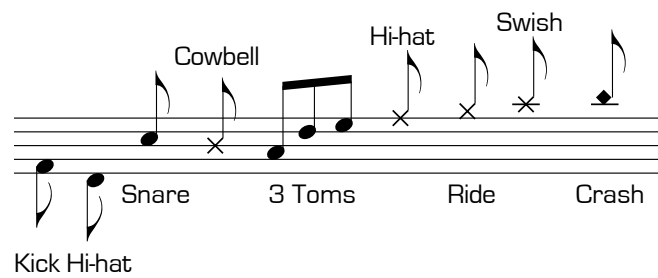
# Instrumentation

3 B $\flat$  Trumpets  
3 Trombones  
1 Bass Trombone  
1 Soprano Saxophone (B $\flat$ )  
1 Alto Saxophone (E $\flat$ )  
1 Tenor Saxophone (B $\flat$ )  
1 Baritone Saxophone (E $\flat$ )  
Piano  
Electric Guitar  
Electric Bass  
Drumset  
Percussion  
Violin (amplified)

## Percussion



## Drumset



# WIZARD

♩ = 84 ♩ = 126  
[ ♩ = ♩ throughout ]

TRANSPOSED SCORE

The score is arranged in a standard orchestral layout. The top section contains three staves for trumpets (labeled 1, Bb Tpt 2, 3) and three staves for trombones (labeled 1, Tbn 2, 3, BTbn). Below these are four staves for saxophones (S.Sax, A.Sax, T.Sax, B.Sax). The piano (Pno) is represented by two staves. The guitar (Gtr) and electric bass (E.Bass) each have one staff. The drum and percussion (Drum, Perc) are shown with two staves, featuring a complex rhythmic pattern with accents and dynamic markings. The violin part is at the bottom with one staff. All melodic instruments have a whole rest in every measure, while the drums and percussion play a consistent, rhythmic accompaniment.

5

1

Bb Tpt 2

3

1

Tbn 2

3

BTbn

S.Sax

A.Sax

T.Sax

B.Sax

5

Pno

Gtr

E.Bass

Drum

Perc

Violin

*mf*

*mf*

*mf*

*mf*

9

1

Bb Tpt 2

3

1

Tbn 2

3

BTbn

S.Sax

A.Sax

T.Sax

B.Sax

9

Pno

Gtr

E.Bass

Drum

Perc

Violin

13

1

Bb Tpt 2

3

1

Tbn 2

3

BTbn

S.Sax

A.Sax

T.Sax

B.Sax

13

Pno

Gtr

E.Bass

Drum

Perc

Violin

17

1

Bb Tpt 2

3

1

Tbn 2

3

BTbn

S.Sax

A.Sax

T.Sax

B.Sax

*p*

*mp*

*p*

17

Pno

Gtr

E.Bass

Drum

Perc

Violin

*mf*

A

21

1

Bb Tpt 2

3

1

Tbn 2

3

BTbn

S.Sax

A.Sax

T.Sax

B.Sax

21

Pno

Gtr

E.Bass

Drum

Perc

Violin

25

Musical score for brass and woodwind instruments. The score is divided into two systems. The first system includes parts for 1st Trumpet (1), 2nd Bb Trumpet (Bb Tpt 2), 3rd Trumpet (3), 1st Trombone (1), 2nd Trombone (Tbn 2), 3rd Trombone (3), Baritone Trombone (BTbn), 1st Saxophone (S.Sax), 2nd Saxophone (A.Sax), 3rd Saxophone (T.Sax), and 4th Saxophone (B.Sax). All parts in this system are marked with a whole rest, indicating they are silent for this section.

25

Musical score for piano, guitar, bass, drums, and strings. The score is divided into two systems. The first system includes parts for Piano (Pno), Guitar (Gtr), and Electric Bass (E.Bass). The Piano part features a complex chordal accompaniment with eighth and sixteenth notes. The Guitar part has a rhythmic pattern of eighth notes with some rests. The Electric Bass part has a simple eighth-note line. The second system includes parts for Drum and Percussion (Perc). The Drum part features a complex rhythmic pattern with many eighth notes and rests. The Percussion part has a simple eighth-note line. The Violin part has a simple eighth-note line.

29

1

Bb Tpt 2

3

1

Tbn 2

3

BTbn

S.Sax

A.Sax

T.Sax

B.Sax

29

Pno

Gtr

E.Bass

Drum

Perc

Violin

33

1

Bb Tpt 2

3

1

Tbn 2

3

BTbn

S.Sax

A.Sax

T.Sax

B.Sax

33

Pno

Gtr

E.Bass

Drum

Perc

Violin

37

This musical score page covers measures 37 through 40. It features a variety of instruments including brass, woodwinds, strings, and percussion. The brass section (Bb Tpt 2, Tbn 2, BTbn) is mostly silent, indicated by rests. The woodwind section (Saxophones) has active parts, with the Bass Saxophone (B.Sax) starting in measure 38 with a *mf* dynamic. The string section (Violin, Viola, Violoncello, Contrabasso) and the rhythm section (Piano, Guitar, Bass, Drums, Percussion) provide a complex accompaniment. The score includes various musical notations such as rests, notes, stems, beams, and dynamic markings.

1

Bb Tpt 2

3

1

Tbn 2

3

BTbn

S.Sax

A.Sax

T.Sax

B.Sax

37

Pno

Gtr

E.Bass

Drum

Perc

Violin

*mf*

**B**

41

1

Bb Tpt 2

3

1

Tbn 2

3

BTbn

S.Sax

A.Sax

T.Sax

B.Sax

41

Pno

Gtr

E.Bass

Drum

Perc

Violin

*f*

*f*

*f*

*fff*

*mp*

*ff*

*f*

*mf*

*p*

45

1

Bb Tpt 2

3

1

Tbn 2

3

BTbn

S.Sax

A.Sax

T.Sax

B.Sax

45

Pno

Gtr

E.Bass

Drum

Perc

Violin

*mf*

*mf*

*mf*

*mf*

*mf*

*mf*

*ff*

*mf*

*poco cresc...*

*f*

49

1

Bb Tpt 2

3

mf

1

Tbn 2

3

BTbn

S.Sax

A.Sax

T.Sax

B.Sax

49

Pno

ff

mf

Gtr

ff

E.Bass

ff

mf

Drum

Perc

f

Violin

p

53

1

Bb Tpt 2

3

1

Tbn 2

3

BTbn

S.Sax

A.Sax

T.Sax

B.Sax

53

Pno

Gtr

E.Bass

Drum

Perc

Violin

57

1  
Bb Tpt 2  
3

1  
Tbn 2  
3  
BTbn

S.Sax  
A.Sax  
T.Sax  
B.Sax

57  
Pno  
Gtr  
E.Bass  
Drum  
Perc  
Violin

*ff* *f* *mf* *f*





69

1

Bb Tpt 2

3

1

Tbn 2

3

BTbn

S.Sax

A.Sax

T.Sax

B.Sax

69

Pno

Gtr

E.Bass

Drum

Perc

Violin

73

1

Bb Tpt 2

3

1

Tbn 2

3

BTbn

S.Sax

A.Sax

T.Sax

B.Sax

73

Pno

Gtr

E.Bass

Drum

Perc

Violin

77

1

Bb Tpt 2

3

1

Tbn 2

3

BTbn

S.Sax

A.Sax

T.Sax

B.Sax

77

Pno

Gtr

E.Bass

Drum

Perc

Violin

81

1

Bb Tpt 2

3

1

Tbn 2

3

BTbn

S. Sax

A. Sax

T. Sax

B. Sax

81

Pno

Gtr

E. Bass

Drum

Perc

Violin

*mf*

*f*

*ff*

*f*

85

1

Bb Tpt 2

3

1

Tbn 2

3

BTbn

S.Sax

A.Sax

T.Sax

B.Sax

85

Pno

Gtr

E.Bass

Drum

Perc

Violin

*ff*

*ff*

*ff*

*ff*

*ff*

*ff*

*poco a poco cresc...*

*fff*

*poco a poco cresc...*



93

1  
Bb Tpt 2  
3  
1  
Tbn 2  
3  
BTbn  
S.Sax  
A.Sax  
T.Sax  
B.Sax  
93  
Pno  
Gtr  
E.Bass  
Drum  
Perc  
Violin

*mf*  
*f*  
*mp*  
*mf*  
*mf*  
*mf*  
*ff*  
*ff*  
*ff*  
*f*  
*f*  
*ff*  
*ff*  
*f*  
*mp*  
*mp*  
*f*

97

1

Bb Tpt 2

3

1

Tbn 2

3

BTbn

S.Sax

A.Sax

T.Sax

B.Sax

97

Pno

Gtr

E.Bass

Drum

Perc

Violin

*poco a poco cresc...*

*mp poco a poco cresc...*

*poco a poco cresc...*

101

1

Bb Tpt 2

3

1

Tbn 2

3

BTbn

S.Sax

A.Sax

T.Sax

B.Sax

101

Pno

Grtr

E.Bass

Drum

Perc

Violin

The musical score for page 26, measures 101-104, is presented in a standard orchestral layout. The score is divided into two systems. The first system (measures 101-103) features a 3/4 time signature. The instruments are arranged in the following order from top to bottom: 1st Bb Trumpet, 2nd Bb Trumpet, 3rd Bb Trumpet, 1st Trombone, 2nd Trombone, 3rd Trombone, Baritone Trombone, Saxophone Section (Soprano, Alto, Tenor, Baritone), Piano, Guitar, Electric Bass, Drum, Percussion, and Violin. The saxophone section and the 1st and 2nd trumpets play a melodic line with accents and slurs, marked with a forte (*f*) dynamic. The piano part provides harmonic support with chords and moving lines. The electric bass and drums provide a steady rhythmic foundation. The 3rd trumpet and 3rd trombone parts are mostly rests. The guitar and violin parts are also rests. The second system (measure 104) continues the 3/4 time signature. The saxophone section and the 1st and 2nd trumpets play a melodic line with accents and slurs, marked with a mezzo-forte (*mf*) dynamic. The piano part provides harmonic support with chords and moving lines. The electric bass and drums provide a steady rhythmic foundation. The 3rd trumpet and 3rd trombone parts are mostly rests. The guitar and violin parts are also rests.

**E** ♩ = 74

105

1

Bb Tpt 2

3

1

Tbn 2

3

BTbn

S.Sax

A.Sax

T.Sax

B.Sax

105

Pno

Gtr

E.Bass

Drum

Perc

Violin

108

1

Bb Tpt 2

3

1

Tbn 2

3

BTbn

S.Sax

A.Sax

T.Sax

B.Sax

108

Pno

Gtr

E.Bass

Drum

Perc

Violin

The musical score for page 28, measures 108-110, features a variety of instruments. The brass section includes Bb Tpt 2 (1, 2, 3), Tbn 2 (1, 3), and BTbn. The saxophone section consists of S.Sax, A.Sax, T.Sax, and B.Sax. The piano part (Pno) is written in grand staff. The guitar (Gtr) and electric bass (E.Bass) parts are in standard notation. The drum and percussion (Drum, Perc) parts use standard notation with 'x' marks for cymbals. The violin part is in treble clef. Dynamics are indicated by *p* (piano) and *f* (forte) with hairpins. The score is marked with a box containing the number 108 at the beginning of the first system and the middle of the second system.



114

1

Bb Tpt 2

3

1

Tbn 2

3

BTbn

S.Sax

A.Sax

T.Sax

B.Sax

114

Pno

Gtr

E.Bass

Drum

Perc

Violin

*p f p p f p f p f p f*

118

1

Bb Tpt 2

3

1

Tbn 2

3

BTbn

S.Sax

A.Sax

T.Sax

B.Sax

118

Pno

Grtr

E.Bass

Drum

Perc

Violin

122

1 *mf* *p* *mf* *p*

Bb Tpt 2 *mf* *p* *mf* *p*

3 *mf* *p* *mf* *p*

1 *p* *f* *p* *f*

Tbn 2 *p* *f* *p* *f*

3 *p* *f* *p* *f*

BTbn *f* *p* *f*

S.Sax *p* *f* *p* *f*

A.Sax *p* *f* *p* *f*

T.Sax

B.Sax *f* *p* *f*

122

Pno

Gtr *mp* *ff* *mp* *ff*

E.Bass

Drum

Perc

Violin *p* *f* *p* *f*

126

1 *mf* *p* *mf* *p* *mp*

Bb Tpt 2 *mf* *p* *mf* *p* *mp*

3 *mf* *p* *mf* *p* *mp*

1 *p* *f* *p* *mp*

Tbn 2 *p* *f* *p* *mp*

3 *p* *f* *p*

BTbn *p* *f* *p* *f*

S.Sax *p* *f* *p* *mp*

A.Sax *p* *f* *p* *mp*

T.Sax *mp*

B.Sax *p* *f* *p* *f*

126

Pno

Gtr *mp* *ff*

E.Bass

Drum

Perc

Violin *p* *f*

accel.....



♩ = 84 ♩ = 126

130

1

Bb Tpt 2

3

1

Tbn 2

3

BTbn

S.Sax

A.Sax

T.Sax

B.Sax

130

Pno

Gtr

E.Bass

Drum

Perc

Violin

*pp* *mp*

*pp* *mf* *ff* *f*

*pp* *mf* *ff* *f*

*p* *mf* *ff* *f*

*mf* *f* *mp*

*mf* *f* *mp*

*mf* *f*

*p* *mf* *f*

*f* *mf*

*mp* *mf*

*mp*



138

1  
Bb Tpt 2  
3  
1  
Tbn 2  
3  
BTbn  
S.Sax  
A.Sax  
T.Sax  
B.Sax  
138  
Pno  
Gtr  
E.Bass  
Drum  
Perc  
Violin

*ff* *mf* *f* *mp* *ff* *f*

142

1 straight mute *con sord.*  
*mp*

Bb Tpt 2 straight mute *con sord.*  
*mp*

3 straight mute *con sord.*  
*mp*

1  
 Tbn 2  
 3  
 BTbn

S.Sax  
 A.Sax  
 T.Sax  
 B.Sax

142

Pno

Gtr

E.Bass

Drum

Perc

Violin

*mf*

146

1

Bb Tpt 2

3

1

Tbn 2

3

BTbn

S.Sax

A.Sax

T.Sax

B.Sax

Detailed description: This block contains the musical notation for measures 146 through 150 for the brass and woodwind sections. The instruments listed are 1st Bb Trumpet, 2nd Bb Trumpet, 3rd Bb Trumpet, 1st Trombone, 2nd Trombone, 3rd Trombone, Baritone Trombone, Soprano Saxophone, Alto Saxophone, Tenor Saxophone, and Baritone Saxophone. The notation includes various note values, rests, and articulation marks. A dynamic marking of *pp* (pianissimo) is indicated with a hairpin crescendo leading to it in the final measure of this section.

146

Pno

Grtr

E.Bass

Drum

Perc

Violin

Detailed description: This block contains the musical notation for measures 146 through 150 for the piano, guitar, bass, drums, percussion, and violin sections. The instruments listed are Piano, Guitar, Electric Bass, Drum, Percussion, and Violin. The notation includes various note values, rests, and articulation marks. The piano part features a complex rhythmic pattern with many beamed notes. The guitar part has a melodic line with some bends. The electric bass part provides a steady accompaniment. The drum and percussion parts have specific rhythmic patterns. The violin part has a melodic line with some slurs.

150 *via sord.*

1

Bb Tpt 2

3

1

Tbn 2

3

BTbn

S.Sax

A.Sax

T.Sax

B.Sax

150

Pno

Grtr

E.Bass

Drum

Perc

Violin

*p*



158

1

Bb Tpt 2

3

Musical notation for Bb Tpt 2 and Tpt 3 parts, measures 158-161. The parts are in 3/4 time and feature a melodic line with some chromaticism.

1

Tbn 2

3

BTbn

Musical notation for Tbn 2, Tbn 3, and BTbn parts, measures 158-161. These parts are mostly rests, indicating they are not playing in this section.

S.Sax

A.Sax

T.Sax

B.Sax

Musical notation for S.Sax, A.Sax, T.Sax, and B.Sax parts, measures 158-161. The saxophone parts feature dynamic markings of *ff* and *f*.

158

Pno

Musical notation for Pno part, measures 158-161. The piano part features a complex chordal accompaniment.

Gtr

E.Bass

Musical notation for Gtr and E.Bass parts, measures 158-161. The guitar part features a rhythmic pattern, and the bass part provides a steady accompaniment.

Drum

Musical notation for Drum part, measures 158-161. The drum part features a complex rhythmic pattern with various drum sounds.

Perc

Musical notation for Perc part, measures 158-161. The percussion part is mostly rests, indicating it is not playing in this section.

Violin

Musical notation for Violin part, measures 158-161. The violin part features a melodic line with dynamic markings of *ff*.

162

1  
Bb Tpt 2  
3

1  
Tbn 2  
3  
BTbn

S.Sax  
A.Sax  
T.Sax  
B.Sax

162

Pno

Gtr  
E.Bass

Drum  
Perc

Violin

166

166

1 *poco a poco cresc...* **ff**

Bb Tpt 2 *poco a poco cresc...* **ff**

3 *poco a poco cresc...* **ff**

1

Tbn 2

3

BTbn

S.Sax *f poco a poco cresc...* **ff**

A.Sax *f poco a poco cresc...* **ff**

T.Sax *f poco a poco cresc...* **ff**

B.Sax *f poco a poco cresc...* **ff**

166

Pno

Gtr *mf* **ff**

E.Bass

Drum **ff**

Perc **ff**

Violin



174

1  
Bb Tpt 2  
3  
1  
Tbn 2  
3  
BTbn  
S.Sax  
A.Sax  
T.Sax  
B.Sax

Detailed description: This block contains the first seven staves of the musical score for measures 174-177. The staves are labeled 1, Bb Tpt 2, 3, 1, Tbn 2, 3, BTbn, S.Sax, A.Sax, T.Sax, and B.Sax. The music is written in 4/4 time. Measures 174-175 feature a melodic line in the upper brass and saxophones, with the T.Sax and B.Sax playing a rhythmic accompaniment. Measures 176-177 continue this pattern with some melodic variation in the upper parts.

174

Pno  
Gtr  
E.Bass  
Drum  
Perc  
Violin

Detailed description: This block contains the last six staves of the musical score for measures 174-177. The staves are labeled Pno, Gtr, E.Bass, Drum, Perc, and Violin. The Pno part features a melodic line in the right hand and a bass line in the left hand. The Gtr part provides a rhythmic accompaniment. The E.Bass part plays a simple bass line. The Drum and Perc parts provide a steady rhythmic accompaniment. The Violin part plays a melodic line in the upper register.

178

1

Bb Tpt 2

3

1

Tbn 2

3

BTbn

S.Sax

A.Sax

T.Sax

B.Sax

178

Pno

Gtr

E.Bass

Drum

Perc

Violin

182

182

1 *f* *mf*

Bb Tpt 2 *f* *mf*

3 *f* *mf*

1 *mf* *f*

Tbn 2 *mf* *f*

3 *mf* *f*

BTbn *mf* *f*

S.Sax *f* *mf*

A.Sax *f* *mf*

T.Sax *mf* *f*

B.Sax *mf* *f*

182

Pno *ff*

Gtr *f* *mf*

E.Bass

Drum

Perc

Violin *ff*

186

1

Bb Tpt 2

3

1

Tbn 2

3

BTbn

S.Sax

A.Sax

T.Sax

B.Sax

*f*

*f*

*f*

*mf*

*mf*

*mf*

*f*

*f*

*mf*

*mf*

186

Pno

Gtr

E.Bass

Drum

Perc

Violin

*f*

*f*

*ff*





198

1

Bb Tpt 2

3

1

Tbn 2

3

BTbn

S.Sax

A.Sax

T.Sax

B.Sax

198

Pno

Gtr

E.Bass

Drum

Perc

Violin

The musical score for page 51, measures 198-201, is arranged in a standard orchestral layout. It features 15 staves. The top three staves are for the trumpet section (1st, Bb Tpt 2, and 3). The next three staves are for the trombone section (1st, Tbn 2, and 3), with a Baritone Trombone (BTbn) part below the 3rd Trombone. The saxophone section consists of four staves: Soprano Sax (S.Sax), Alto Sax (A.Sax), Tenor Sax (T.Sax), and Baritone Sax (B.Sax). The piano (Pno) part is a grand staff with both treble and bass clefs. The guitar (Gtr) part is on a single staff. The electric bass (E.Bass) part is on a single staff. The drum and percussion (Drum and Perc) parts are on two staves. The violin part is on a single staff at the bottom. The score is in 6/8 time and includes various dynamics such as *f*, *ff*, and *fz*, as well as articulation marks like accents and slurs.



